

STAINLESS STEEL FITTINGS PN20 INITIAL RANGE



Size : DN 1/8" to DN 4"
Ends : Male, female or welding
Min Temperature : - 25°C
Max Temperature : + 180°C
Max Pressure : 20 Bars
Specifications : "Lost wax" moulding
Threaded BSP

Materials : Stainless steel

STAINLESS STEEL FITTINGS PN20 INITIAL RANGE

SPECIFICATIONS :

- “ Lost wax ” moulding
- Male conical threaded BSP
- Female cylindrical threaded BSP

USE :

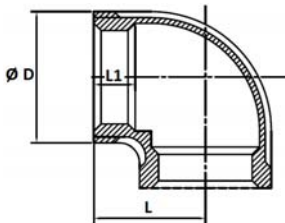
- For all common fluids
- Min Temperature Ts : - 25°C
- Max Temperature Ts :+ 180°C
- Max Pressure Ps : 20 bars

RANGE :

- From DN 1/8" to DN 4"
- ASTM A351 CF8M fittings

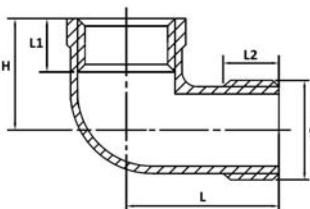
SIZE (in mm) :

- **Elbow 90° F. F. (DN 1/8"– 4") Ref. 2070**



DN	1/8"	1/4"	3/8"	1/2"	3/4"	1"	1"1/4	1"1/2	2"	2"1/2	3"	4"
L	17	19	23	25	27.5	33	40	43	52	65	75	92
L1	5.6	8.4	8.8	9.2	10.2	11.6	13.5	13.5	16.9	18.6	21	25.8
Ø D	15.5	19	22.5	26.5	32.5	39.5	48.5	55	67.5	84	97	123.5
Weig. (Kg)	0.022	0.022	0.033	0.052	0.074	0.114	0.188	0.237	0.410	0.880	1.3	2.21

- **Elbow 90° M. F. (DN 1/8"– 3") Ref. 2072**

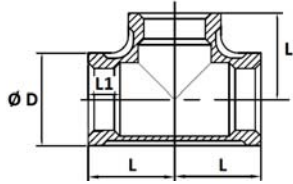


DN	1/8"	1/4"	3/8"	1/2"	3/4"	1"	1"1/4	1"1/2	2"	2"1/2	3"
L	26	28	30	34	38.5	45	52.5	56	68.5	81.5	92.5
L1	8	11.5	12	9.2	10.2	11.6	13.5	13.5	16.9	18.6	21
L2	8	9.5	10.5	13	14.5	16	18	18	20	22	25
H	17	19	23	24	27	32	39	41.5	51	65	75
Ø D	10	13.6	17.2	21.5	27.1	34.3	43	49	61.5	77	90
Weig. (Kg)	0.017	0.028	0.043	0.048	0.072	0.117	0.185	0.247	0.425	0.873	1.199

STAINLESS STEEL FITTINGS PN20 INITIAL RANGE

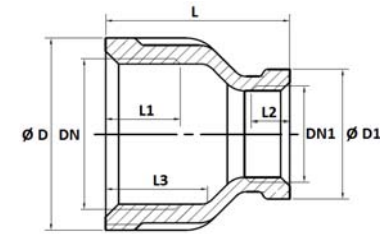
SIZE (in mm) :

- Tee F. F. F. (DN 1/8" – 4") Ref. 2071



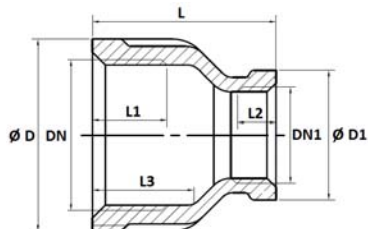
DN	1/8"	1/4"	3/8"	1/2"	3/4"	1"	1"1/4"	1"1/2"	2"	2"1/2"	3"	4"
L	17	19	23	25	27.5	33	40	43	52	65	75	92
L1	5.6	8.4	8.8	9.2	10.2	11.6	13.5	13.5	16.9	18.6	21	25.8
Ø D	15.5	19	22.5	26.5	32.5	39.5	48.5	55	67.5	84	97	123.5
Weig. (Kg)	0.030	0.048	0.071	0.067	0.098	0.152	0.252	0.323	0.546	1.075	1.607	2.724

- Reduced nipple F. F. (DN 1/8" – 2") Ref. 2073



DN	1/8"	1/4"	3/8"	1/2"	3/4"	1"	1"1/4"	1"1/2"
DN1	1/4"	3/8"	1/2"	3/4"	1"	1"1/4"	1"1/2"	2"
Ø D	19	22.5	26.8	32.5	39.8	48.8	55.2	67.5
Ø D1	15.5	19	22.5	26.8	32.5	39.8	48.8	55.2
L	25.5	29	31	33.5	38	41	45.5	49
L1	9.7	10.1	13.2	14.5	16.8	19.1	19.1	23.4
L2	6.5	9.7	10.1	13.2	14.5	16.8	19.1	19.1
L3	13	13	16.5	18	21	23	23	28
Weig.(Kg)	0.021	0.029	0.041	0.057	0.092	0.130	0.177	0.270

- Double reduced nipple F. F. (DN 1/8" – 2") Ref. 2074

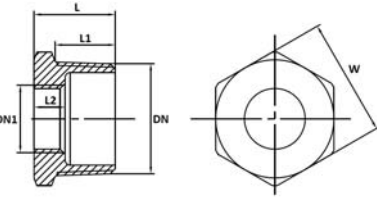


DN	1/8"	1/4"	3/8"	1/2"	3/4"	1"	1"1/4"
DN1	3/8"	1/2"	3/4"	1"	1"1/4"	1"1/2"	2"
Ø D	22.5	26.8	32.5	39.8	48.8	55.2	67.5
Ø D1	15.5	19	22.5	26.8	32.5	39.8	48.8
L	29	31	33.5	38	41	45.5	49
L1	10.1	13.2	14.5	16.8	19.1	19.1	23.4
L2	6.5	9.7	10.1	13.2	14.5	16.8	19.1
L3	13	17	18	21	23	24	28
Weig. (Kg)	0.027	0.038	0.056	0.086	0.124	0.168	0.270

STAINLESS STEEL FITTINGS PN20 INITIAL RANGE

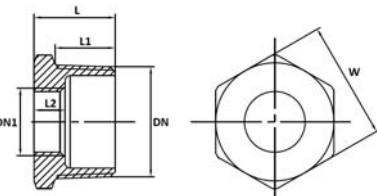
SIZE (in mm) :

- **Reduced nipple M. F. (DN 1/8" – 2") Ref. 2075**



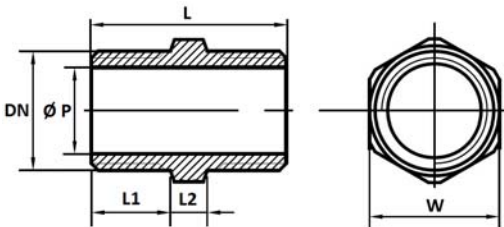
DN	1/8"	1/4"	3/8"	1/2"	3/4"	1"	1"1/4	1"1/2
DN1	1/4"	3/8"	1/2"	3/4"	1"	1"1/4	1"1/2	2"
L	16	16.5	19.5	21	24	27.5	28.5	32
L1	11.5	11.5	14.5	15.5	18	21	22	25
L2	-	8	9	10.5	11.5	12.5	15	15
W	14	18	22	28	35	43.5	49.5	62
Weight (Kg)	0.009	0.012	0.019	0.032	0.054	0.090	0.092	0.193

- **Double reduced nipple M. F. (DN 1/8" – 2") Ref. 2078**



DN	1/8"	1/4"	3/8"	1/2"	3/4"	1"	1"1/4
DN1	3/8"	1/2"	3/4"	1"	1"1/4	1"1/2	2"
L	16.5	19.5	21	24	27.5	28.5	32
L1	11.5	14.5	15.5	18	21	22	25
L2	7	8	9	10.5	11.5	12.5	15
W	18	22	28	35	43.5	49.5	62
Weight (Kg)	0.014	0.024	0.041	0.070	0.114	0.144	0.248

- **Hexagon male nipple (DN 1/8" – 2") Ref. 2084**

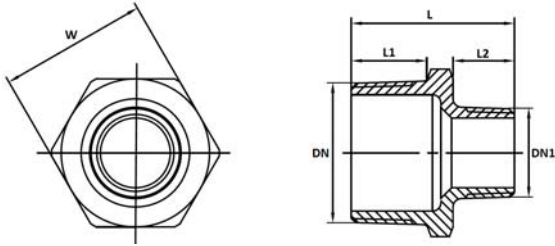


DN	1/8"	1/4"	3/8"	1/2"	3/4"	1"	1"1/4	1"1/2	2"
L	20	25	27	34	36.5	42	47.5	47.5	57
L1	8	10.5	11	14.5	15.5	18	20.5	20.5	25
L2	4	4	5	5	5.5	6	6.5	6.5	7
Ø P	7	9.5	13	16.5	21.5	27.5	36	41.5	52.5
W	11	15	18	22	28	35	43.5	49.5	62
Weig. (Kg)	0.005	0.012	0.017	0.028	0.045	0.072	0.102	0.126	0.232

STAINLESS STEEL FITTINGS PN20 INITIAL RANGE

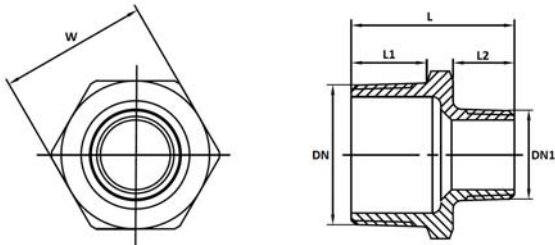
SIZE (in mm) :

- **Reduced nipple male - male (DN 1/8" – 2") Ref. 2085**



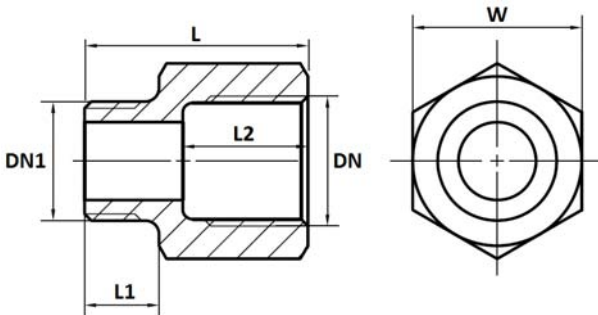
DN	1/4"	3/8"	1/2"	3/4"	1"	1"1/4	1"1/2	2"
DN1	1/8"	1/4"	3/8"	1/2"	3/4"	1"	1"1/4	1"1/2
L	22.5	24	30.5	35.5	39.5	45	47.5	52.5
L1	10.5	11	14.5	15.5	18	20.5	20.5	25
L2	8	10.5	11	14.5	15.5	18	20.5	20.5
W	15	18	22	28	35	43.5	49.5	62
Weig. (Kg)	0.013	0.021	0.025	0.040	0.065	0.100	0.130	0.220

- **Double reduced nipple male - male (DN 1/8" – 2") Ref. 2086**



DN	3/8"	1/2"	3/4"	1"	1"1/4	1"1/2	2"
DN1	1/8"	1/4"	3/8"	1/2"	3/4"	1"	1"1/4
L	24	29.5	32	38.5	42.5	45	52.5
L1	11	14	15.5	18	20.5	20.5	25
L2	8	10.5	11	14.5	15.5	18	20.5
W	18	22	28	35	43.5	49.5	62
Weig. (Kg)	0.025	0.024	0.038	0.065	0.096	0.128	0.216

- **Reduced nipple female - male (DN 1/8" – 2") Ref. 2087**

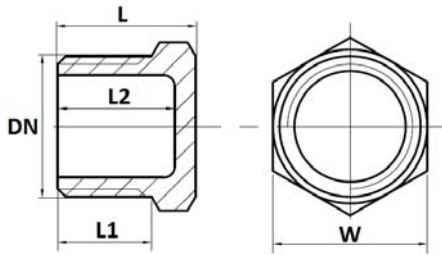


DN	1/4"	3/8"	1/2"	3/4"	1"	1"1/4	1"1/2	2"
DN1	1/8"	1/4"	3/8"	1/2"	3/4"	1"	1"1/4	1"1/2
L	25	28	32	37	41.5	47	49.5	54
L1	8	10.5	11	14.5	15.5	18	20.5	20.5
L2	14	14.5	18	19	22.5	25	25	29.5
W	17	20.5	25	31	38	47	53	66
Weig. (Kg)	0.022	0.032	0.054	0.084	0.130	0.214	0.262	0.420

STAINLESS STEEL FITTINGS PN20 INITIAL RANGE

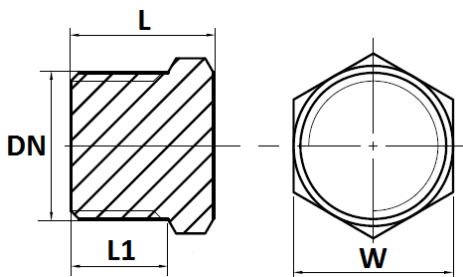
SIZE (in mm) :

- Male hexagon plug (DN 1/4" – 2") Ref. 2076



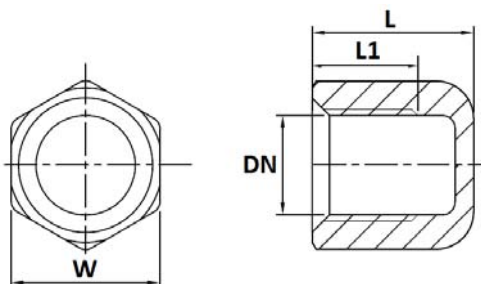
DN	1/2"	3/4"	1"	1"1/4	1"1/2	2"
L	19.5	21	24	27	27	32
L1	14.5	15.5	18	20.5	20.5	25
L2	17.8	19.3	22	24.7	24.5	29
W	22	28	35	43.5	49.5	62
Weig. (Kg)	0.022	0.033	0.054	0.080	0.105	0.185

- Plain male hexagon plug (DN 1/8" – 2") Ref. 2077



DN	1/8"	1/4"	3/8"	1/2"	3/4"	1"	1"1/4	1"1/2	2"
L	12	14.5	16	19.5	21	24	27	27	32
L1	8	10.5	11	14.5	15.5	18	20.5	20.5	25
W	12	14	17	22	27	34	46	50	60
Weig. (Kg)	0.008	0.015	0.027	0.051	0.088	0.157	0.293	0.368	0.695

- Female hexagon plug (DN 1/4" – 2") Ref. 2090

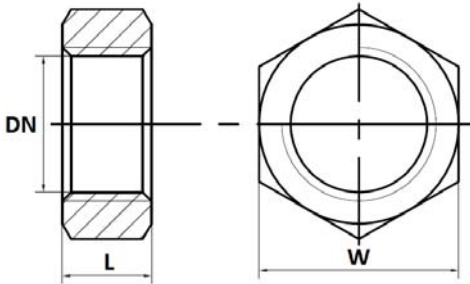


DN	1/4"	3/8"	1/2"	3/4"	1"	1"1/4	1"1/2	2"
L	14	14.5	18.5	19	22	25	25	30
L1	9.7	10.1	13.2	14.5	16.8	19.1	19.1	23.4
W	17	20.5	25	30.5	37.5	46	52.5	64.5
Weig. (Kg)	0.015	0.021	0.037	0.049	0.082	0.122	0.167	0.270

STAINLESS STEEL FITTINGS PN20 INITIAL RANGE

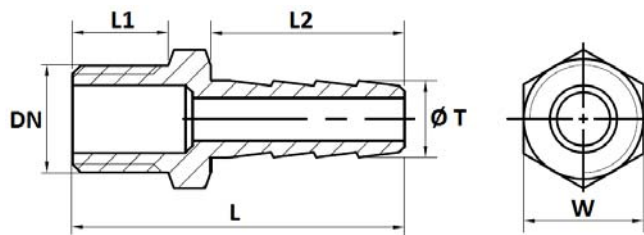
SIZE (in mm) :

- Hexagon nut (DN 1/8"– 2") Ref. 2089



DN	1/8"	1/4"	3/8"	1/2"	3/4"	1"	1"1/4	1"1/2	2"
L	5	6	6	7	7	9	11	11	13
W	15	18	22	27	32	40	48	55	68
Weig. (Kg)	0.005	0.007	0.010	0.016	0.018	0.035	0.050	0.065	0.116

- Male hose nozzle (DN 1/4"– 2") Ref. 2088



DN	1/4"	3/8"	1/2"	3/4"	1"	1"1/4	1"1/2	2"
L	34.5	41	48.5	58	67	70	74	83
L1	10.5	11	14.5	15.5	18	20.5	20.5	25
L2	20	25	29	37	43	43	47	51
Ø T	9	11.5	15	20	27	33	39.5	52
W	15	18	22	28	35	43.5	49.5	62
Weig. (Kg)	0.013	0.020	0.035	0.065	0.105	0.119	0.190	0.333

STANDARDS :

- Fabrication according to ISO 9001 : 2008
- DIRECTIVE 2014/68/EU : Products excluded from directive (Article 1, § 2.b)
- Male conical BSP threaded according to ISO 7/1 R for Ref. 2072, 2075, 2076, 2077, 2078, 2084, 2085, 2086, 2087 and 2088
- Female cylindrical BSP threaded according to ISO 7/1 Rp for Ref. 2070, 2071, 2072, 2073, 2074, 2075, 2078, 2087, 2089 et 2090

ADVICE : Our opinion and our advice are not guaranteed and SFERACO shall not be liable for the consequences of damages. The customer must check the right choice of the products with the real service conditions.